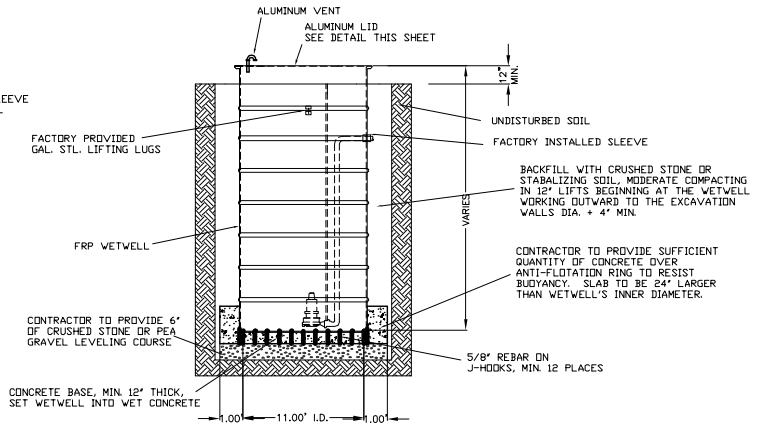
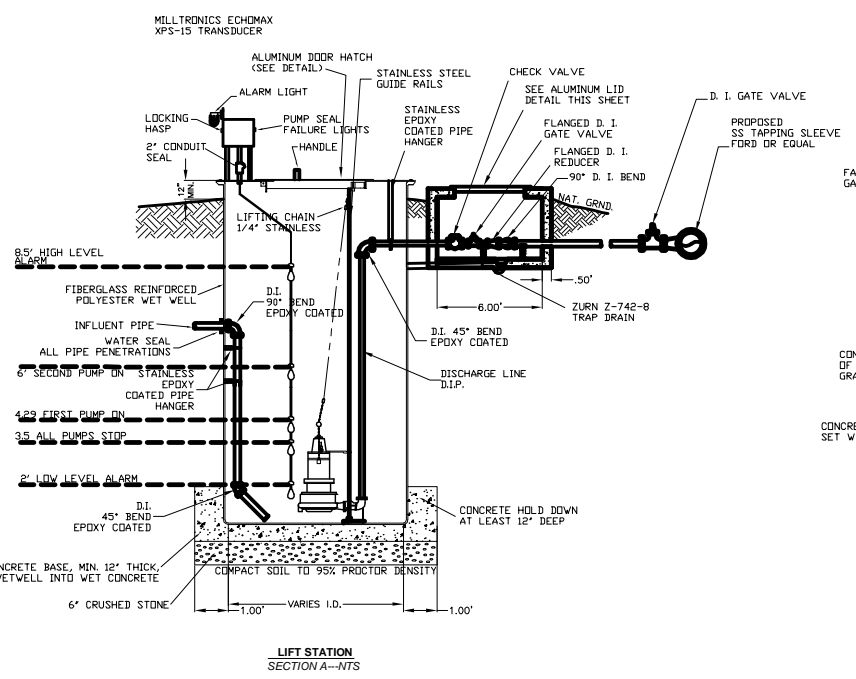
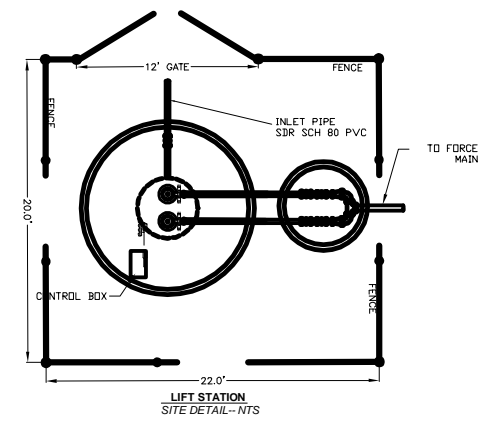
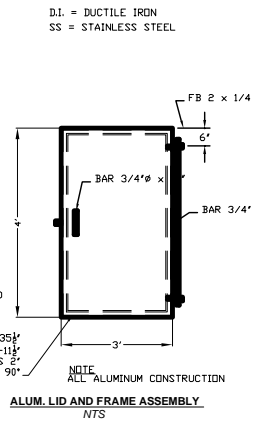
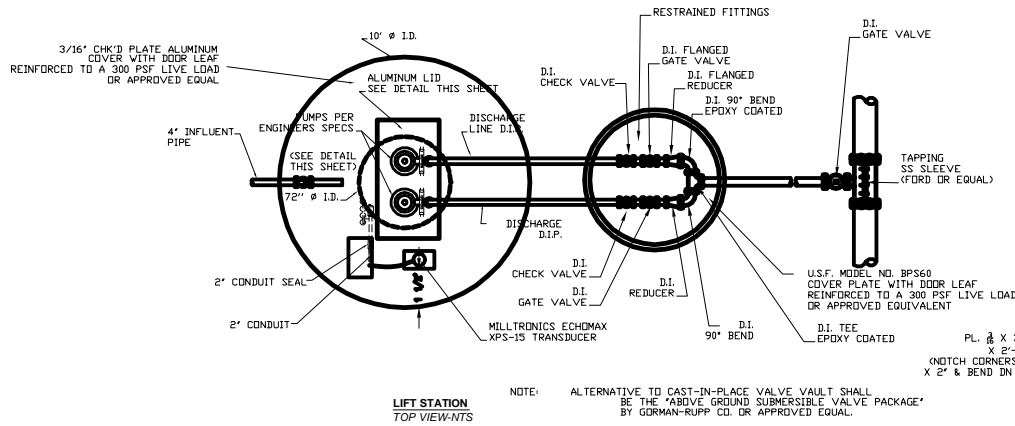


SCALE:  
NTS



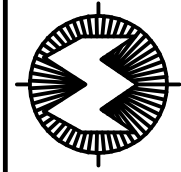
NOTE:  
WETWELL DESIGNED, FABRICATED, INSPECTED, TESTED AND MARKED IN ACCORDANCE WITH A.S.T.M. D-3753 SPECIFICATIONS.

SPECIFICATIONS:  
WET WELL:  
FIBERGLASS REINFORCED POLYESTER WET WELLS SHALL BE MANUFACTURED FROM COMMERCIAL GRADE POLYESTER RESIN OR VINYL ESTER RESIN WITH FIBERGLASS REINFORCEMENTS. THE RESIN SYSTEM SHALL BE SUITABLE FOR ATMOSPHERES CONTAINING HYDROGEN SULPHIDE ACID AS WELL AS OTHER GASES ASSOCIATED WITH THE WATER-COLLECTION SYSTEMS. THE WET WELL SHALL BE A ONE PIECE UNIT MANUFACTURED BY LF MANUFACTURING, INC. GIDDINGS, TEXAS, OR AN APPROVED EQUAL.



City of  
Horseshoe Bay

LIFT STATION DETAIL



Willis Environmental  
Engineering, Inc.

CONSULTING ENGINEERS

310 MAIN STREET, MARBLE FALLS, TEXAS 78654

• (830) 693-3566 • FAX (830) 693-5362 • e-mail: tplumlee@willis-engineering.com