

Street Closures for Resurfacing

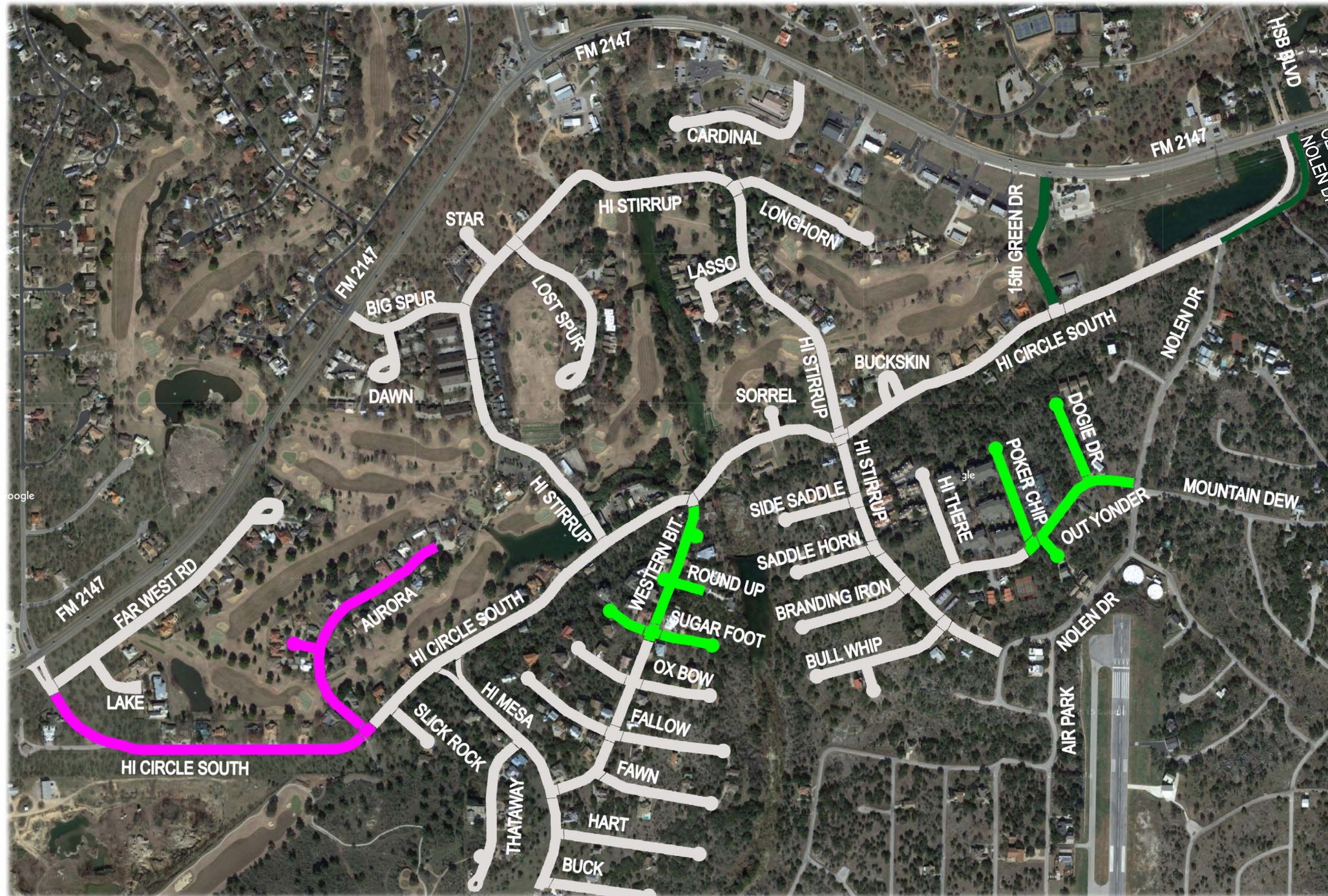
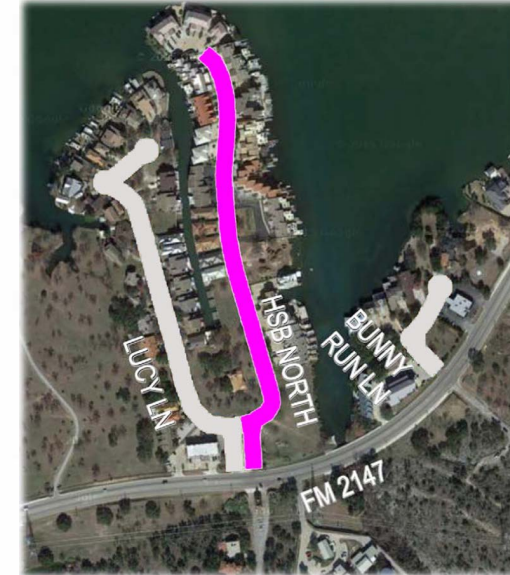
Alpha Paving Industries has been contracted by the City of Horseshoe Bay to perform resurfacing of the streets using an environmentally friendly, pavement sealer on your street. Our process involves application of several coats of a liquid asphalt mixture, which is wet when first applied, and must cure/dry before being driven on. This will be a 2 DAY process for EACH phase that will involve closing the street from 8:00AM to 5:00PM. This work will be done per the color coded schedule as shown.



Please **DO NOT PARK** on your street FROM 8:00 AM to 5:00 PM on your scheduled dates to prevent your vehicle from being TOWED. Access IN AND OUT of your driveway WILL NOT BE POSSIBLE. If you need to leave your home after 8:00AM, please move your car earlier to another street color that is not being resurfaced that day. Otherwise you may not be able to get out of your driveway due to the wet material. If you need assistance with access to/from your home via a golf cart please call 512.656.1844. If you have any questions or concerns, please contact the City of Horseshoe Bay.

ADDITIONAL NOTES: Please do not drive on the fresh new surface until the traffic control signs, cones and barricades have been removed - The sealer WILL STAIN shoes, clothing, carpet, vehicles, sidewalks, and driveways - Please keep your pets and children indoors during work days. -

Please turn off sprinklers during work days for your street. Water could damage the new surface and impede the drying process. - Please note that you may see slight tire marks on concrete driveways for the first few weeks after work is done but please know that this is normal and will go away in 30 days.



CLOSURE SCHEDULE

- CLOSED FRI 6/30 + MON 7/10
8:00 AM ~ 5:00 PM
- CLOSED TUE 7/11 + WED 7/12
8:00 AM ~ 5:00 PM

PLEASE NOTE: MISSED WORK DAYS DUE TO BAD WEATHER WILL BE RESCHEDULED TO THE END OF THE PROJECT IN ORDER TO PRESERVE THE REMAINDER OF THE SCHEDULE